

Thank you for your interest in Proplanner process management solutions. Our software enables engineers to reduce the time and costs associated with improving process flow and manufacturing output. You will find a complete review of our products as well as forums to answer questions on our website: www.proplanner.com

The tutorials located in the Help Manual (located through the software Help menu or at www.proplanner.com/support/product-support-files/) are a good place to start learning the programs, as are the web overview and tutorial videos located at <http://www.proplanner.com/support/videos>.

If you need additional assistance, please contact our support desk at support@proplanner.com

Before you begin, please review the software requirements and ensure that your systems are compatible.

Installation

1. If you have installed a version of Flow Planner prior to 5.1.0.0 on your computer, you will need to request an activation key upon installing and opening this version of Flow Planner.
2. Extract the contents of the FPsetup file.
3. Double click on the appropriate **setup.exe** file, depending on your Operating System version (x86 for 32-bit systems and x64 for 64-bit systems), to install the software.

The install location is C:\Program Files\Autodesk\Application Plugins\Proplanner FlowPlanner.bundle.

Note: Since FlowPlanner is an add-on to AutoCAD, it cannot be opened directly; it must be opened through AutoCAD.

4. Follow the Install Wizard to proceed through the License Agreement, Customer Information, and Ready to Install screens.
 - Ensure Customer Information is entered correctly, this is used later by Proplanner to generate a license
5. Open AutoCAD, select the appropriate ribbon in the top menu (location shown in the figure below), and click on the Flow Planner icon to launch the program as shown in **Figure A**.

AutoCAD Version	Add-ins Ribbon	Plug-ins Ribbon	Proplanner Ribbon
2020	X		
2019	X		
2018	X		
2017	X		
2016	X		
2015	X		
2014		X	

Figure A: Location Matrix

6. Once Flow Planner opens, a licensing window will appear (**Figure B**).

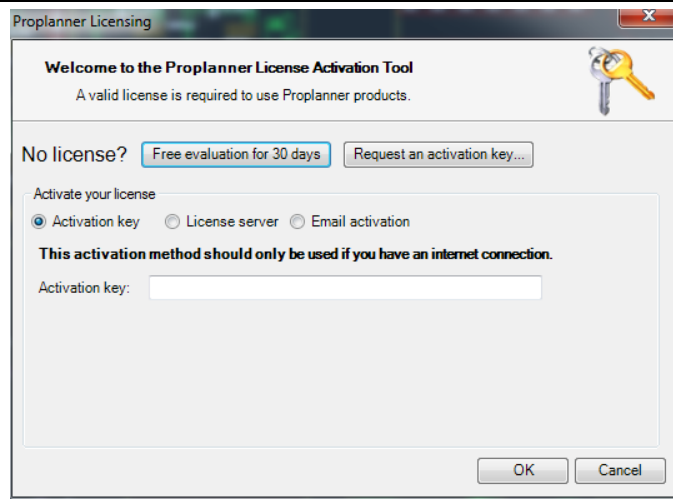


Figure B: Licensing Window

7. Select 'Free evaluation for 30 days' and click 'OK' to begin using the application immediately.
8. If you are using a RLM License Server, please skip to Step 11. If you wish to request an extended or permanent license, you can reopen the application, select the 'Settings' tab and then select 'View License' (**Figure C**). Another window will come up. Click 'Update License' and then select the 'Request an activation key...' option (**Figure D**).

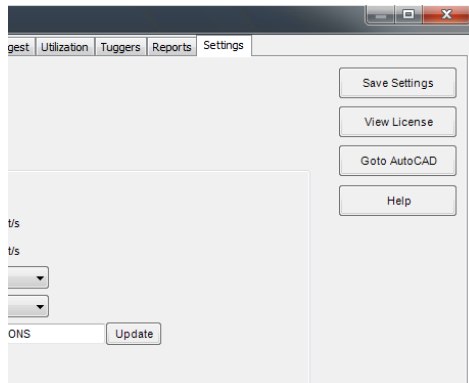


Figure C: Route to License Information

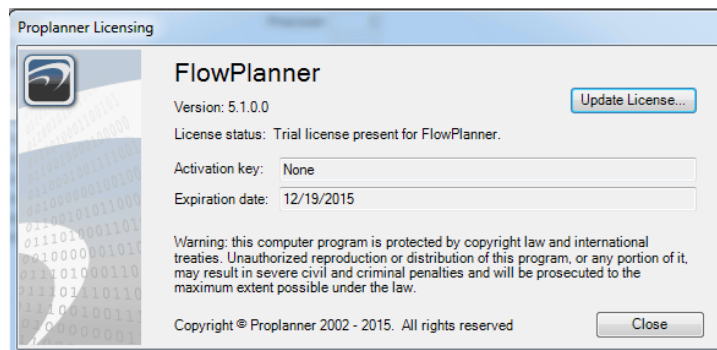


Figure D: License Information

9. You will see a screen similar to the one in **Figure E**; enter your Company name and select 'Send email' which will then send an email to a Proplanner representative.

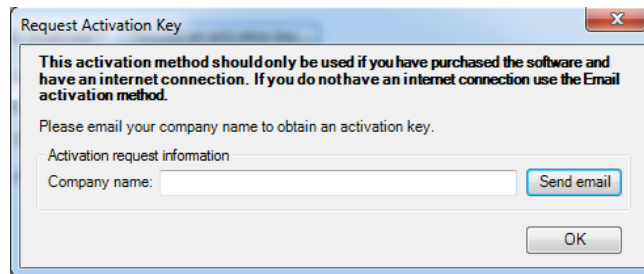


Figure E: Request Activation Key Window

10. Proplanner will then determine your eligibility for an extended license and will email you an activation key code that you put in the same window as **Figure B**.
11. If you are using a RLM License Server, you will select the middle button called 'License Server'. You will then input the server name that the license is located on and the port number.
- If you are unsure of what the server name and/or the port number is, contact your server administrator.

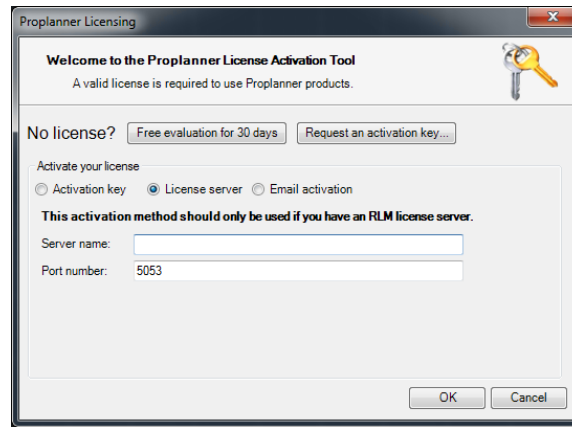


Figure F: RLM License Server

12. If the floating network license type is used, the Flow Planner Installer (setup.exe) supports the auto creation of network license files on the client machines, by passing command line arguments to the setup.exe as shown below:

```
setup.exe /v "RLMSERVERNAME=servername"
```

Note: Please note there is no space between /v and the quotes.

Also the parameter name RLMSERVERNAME should all be uppercase, since the msi engine is case sensitive when parsing the parameters.

If the users need to customize even the port used by the license server then the command will be:

```
setup.exe /v "RLMSERVERNAME=servername RLMPORT=5053"
```

Note: If no port is passed the install will assume the default port number 5053.